

Receptor and Metabolic Autoradiography for Windows[™]

\$4995

INQUIRY autorad[®] makes quick work of Receptor and Metabolic Autoradiography Applications.

The intuitive interface makes calibration to autoradiographic standards, plasma curve calculation and measuring your image data sets easy and accurate. Quickly access all functions to speed your work and shorten learning curves. Sample tables, calibration tables, sampling tools and image mapping controls are a mouse click away.

Metabolic Plasma Integrals

Quickly enter and calculate plasma integrals for Cerebral Blood Flow, Glucose Utilization, and Protein Synthesis Metabolic Rate measurements.

Local Cerebral Glucose Utilization - CARBON.DG			
Measured Plasma Variables			
Number of Observations: 11			
Entry	Time	DG*	G
1	0.33	1176	180.00
2	0.68	1213	180.00
3	1.42	197	180.00
4	1.92	144	180.00
5	2.56	144	180.00
6	32.45	140	180.00
7	38.92	110	180.00
8	41.38	129	180.00
9	43.53	147	180.00
10	44.46	120	180.00
11	50.50	98	180.00
12			
13			

K Factors			
Gray Matter	K1	K2	K3
	0.189	0.245	0.052
White Matter	0.079	0.133	0.020
Structure	0.134	0.189	0.036

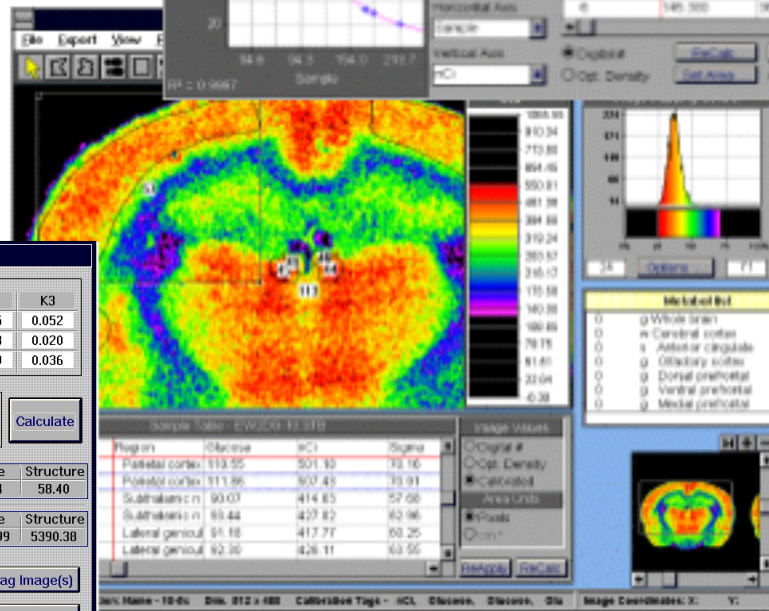
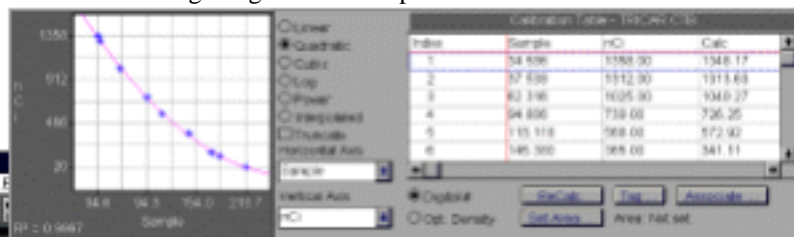
Constants			
Lumped Constant	0.483	Calculate	
Kill Time	75.00		

Final Tissue DG* Concn.			
	Gray	White	Structure
	62.37	50.84	58.40

Final Plasma Integrals			
	Gray	White	Structure
	5449.19	5274.99	5390.38

Calibration to Standards

Points are plotted as regions are sampled. Select one of five curve fits (Linear, Quadratic, Cubic, Power, Interpolated) and truncated or extended fit. Tag images with multiple curve fits.



Special Applications Support

Inquiry offers a complement of features useful in a variety of research applications. Image registration and fusion tools, color bars, image filters and image arithmetic expand your lab capabilities (for example: specific binding and dual label studies). Modules also available for 3D Visualization and Volume measurement, Stage Control, Whole Body Autoradiography and much more.

LAI Company History

Loats Associates, Inc. (LAI), based in Westminster, MD, was founded in January 1982 to provide cost-effective professional services and computer systems for the image analysis of spatially-distributed biological data. In 1983, LAI expanded its image analysis technology to develop a line of low-cost Biomedical Image Analysis Systems. The first biomedical research system was produced for Receptor Autoradiography Analysis. LAI has since developed systems for Metabolic Autoradiography (Glucose Utilization, Cerebral Blood Flow, Protein Synthesis), Whole Body Autoradiography, Dual-Label Studies, 3D Volume and Surface Analysis, and others.

For more information on the scientific, engineering and technical services and systems offered, please contact Loats Associates.

Sophisticated Sampling

- Advanced sampling techniques include thresholded, redirected, and atlas sampling for a variety of applications.
- Over 30 measures available (density, shape, etc.) and a range of expert region-of-interest tools (freehand, line, grid, edge, auto-object, etc).
- Links maintained between sample tables, images, and calibration curves to facilitate reviews and audits of past work.

Loats Associates, Inc.

201 E. Main Street, Westminster, MD 21157
Phone: (410) 876-8055 Fax (410) 876-5843 E-Mail: loats@loats.com

INQUIRY autorad[®] the latest Autoradiography system from Loats Associates, Inc.

Compatibility

Export Tables and Images to external applications like Microsoft[™] Excel, Word and PowerPoint, to create professional looking presentations, reports and articles. Make slides, overheads, and paper printouts using one of many available output devices (Slide Makers, Color Printers, etc.)

Export Table Formats:

- Windows Clipboard
- Ascii Text

Export Image Formats

- Windows[™] Bitmap (.bmp)
- Tagged Image File Format (.tif)

Import images from a variety of sources: Scanners, Molecular Dynamics[™] PhosphorImager and Personal Densitometer, and Video Cameras. Import 8 and 16 bit greyscale images, 24 and 32 bit color images.

Import Image Formats:

- Tagged Image File Format (.tif)
- Molecular Dynamics[™] ImageQuant (.gel)
- Raw Data (.frm)

Hardware and Software Requirements:

IBM-Compatible 80386 or better
Computer with:

- Windows[™] 3.1, enhanced mode
- DOS 3.3 or above,
- 1024x976 pixel display with 256 colors, minimum
- Microsoft[™]-Compatible Mouse
- 4Mbytes of RAM minimum available to Inquiry (more memory = more or larger images)
- 5Mbytes of Hard Disk space available to Inquiry, plus additional hard disk space for image and data storage
- External applications for Word Processing, Spreadsheet, Slide Presentation

INQUIRY autorad[®] comes with Licensed Software, User's Manual, Tutorial, and 90-day Telephone Support.

Also Available from LAI (call for pricing)

- Technical Support
- Software Training
- Consulting Services
- Custom Systems and Software
- Statistical Macros for Excel to Analyze Whole Study Data
- Digitizing Subsystems:
Digitizer board, Video Camera and Lens, Camera Stand, Lightbox, Focus Monitor, and Installation (optional)
- Turnkey Systems (hardware and software including digitizing subsystems)

INQUIRY[®] Software License - \$4995.⁰⁰

Phone: (410) 876-8055 Fax: (410) 876-5843 E-mail: loats@loats.com

Loats Associates, Inc.

201 E. Main Street, Westminster, MD 21157
Phone: (410) 876-8055 Fax (410) 876-5843 E-Mail: loats@loats.com